

800
Independence

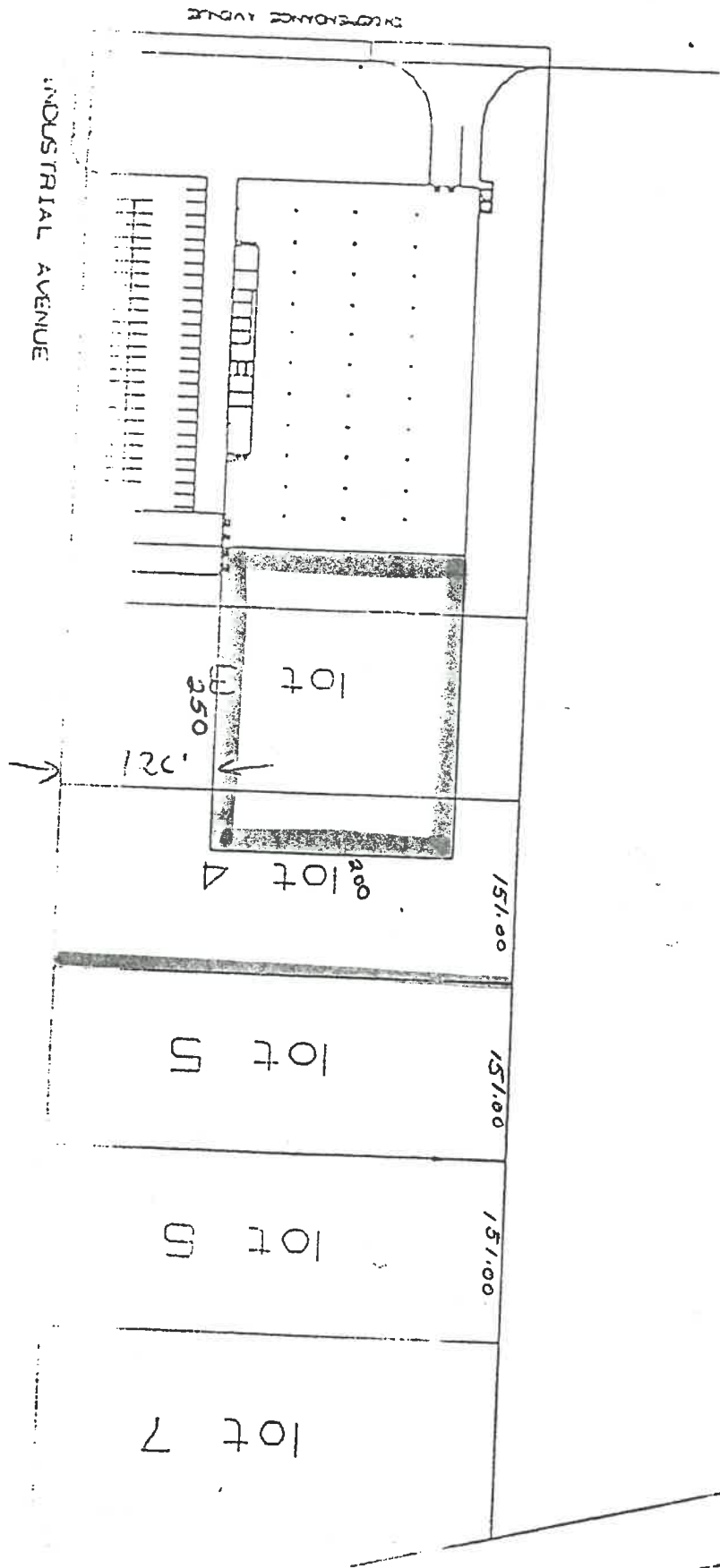


EXHIBIT "A"

D - See back
side & rear

NAPOLEON INDUSTRIAL PARK
 INDEPENDENCE DRIVE STORM SEWER IMPROVEMENT
 PRELIMINARY ENGINEERS ESTIMATE

EAST STORM EXTENSION

<u>DESCRIPTION</u>	<u>QUANTITY</u>	<u>UNIT PRICE</u>	<u>TOTAL</u>
36" storm sewer	480 l.f.	\$ 40.00	\$19,200.00
30" storm sewer	335 l.f.	\$ 35.00	\$11,725.00
Construct M.H. over existing 54" storm sewer	lump sum	\$1,000.00	\$ 1,000.00
Storm sewer (5' dia.)	2 each	\$1,500.00	\$ 3,000.00
Reconstruct existing catch basins	2 each	\$ 600.00	\$ 1,200.00
Seeding, fertilizer and mulching	4000 s.y.	\$ 0.40	\$ 1,600.00
Sub-total EAST STORM EXTENSION			\$37,725.00
10% Contingency			\$ 3,773.00
			<u>\$41,498.00</u>

WEST STORM EXTENSION

<u>DESCRIPTION</u>	<u>QUANTITY</u>	<u>UNIT PRICE</u>	<u>TOTAL</u>
36" storm sewer	446 l.f.	\$ 40.00	\$17,840.00
27" storm sewer	330 l.f.	\$ 32.00	\$10,560.00
Storm sewer (5' dia.)	2 each	\$1,500.00	\$ 3,000.00
Reconstruct existing catch basins	1 each	\$ 600.00	\$ 600.00
Seeding, fertilizer and mulching	3500 s.y.	\$ 0.40	\$ 1,400.00
Sub-total WEST STORM EXTENSION			\$33,400.00
10% Contingency			\$ 3,340.00
			<u>\$36,740.00</u>

TOTAL PROJECT \$78,238.00

24

6

LIA R/W

See Sheet 4

See Sheet 5

See Sheet 5

See Sheet 6

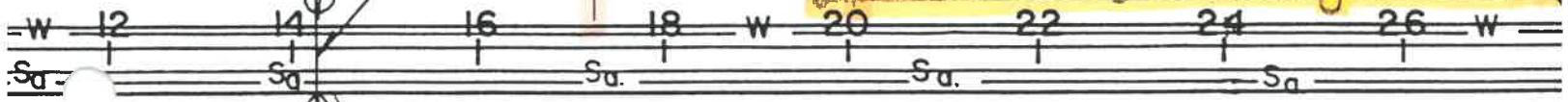
Jim Angelo Feed

Jim Angelo

WEST STORM SEWER

Property Line
Sta. 14+22.46

17+20N
End Work



15+00 N

30' Temporary Easement

20' Permanent Easement

30' Temporary Easement

20'
30'

10+00 N

156.39

15+00E

20+00E

5+00N

